

# DanFlow **Catalogue**

Get into the flow with MMT flow meters

[www.mmtsystems.com](http://www.mmtsystems.com)



## MEDKONSULT MEDICAL TECHNOLOGY

# FEEL THE FLOW

Urodynamics made easy with MMT



Dear Customer,

**MEDKONSULT medical technology s.r.o.** are pleased to introduce the DanFlow range of urine flow meters.

Uroflowmetry is one of the simplest forms of urodynamic testing and with the DanFlow range of urine flow meters MMT have made Uroflowmetry simple again! The MMT product portfolio of flow meters includes different hardware and software options to meet the different needs of each urological workplace.

MMT accessories for uroflowmetry meet the high demands of sterile hospital environments and allow comfortable handling during the examination. The DanFlow range of flow meters all utilise weight cell transducer technology to transform urine flow from the patient into a graphical format, with some additional statistics commonly required such as maximum flow, average flow, volume voided, and flow time.

Weight cell transducers used in Uroflowmetry have transformed this simple procedure, in particular – making cleaning of your equipment easy and straight forward.

All MMT products are designed and manufactured in accordance with the valid legislation including CE, ISO and other certification as required. MMT products are currently delivered into more than 50 countries through our dynamically growing network of our distribution partners.

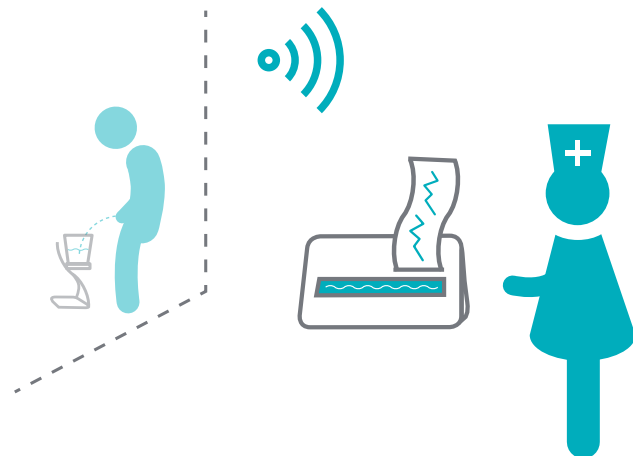
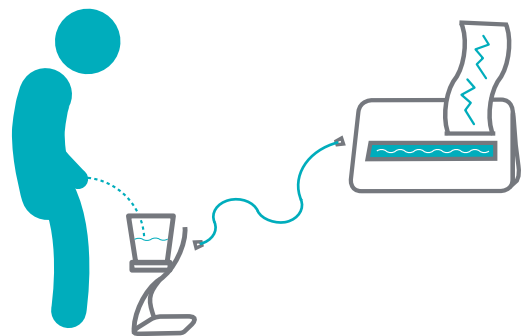
[www.mmtsystems.com](http://www.mmtsystems.com)

# DanFlow 1000/1100

Urine flow rate systems for the busy Urodynamic department.



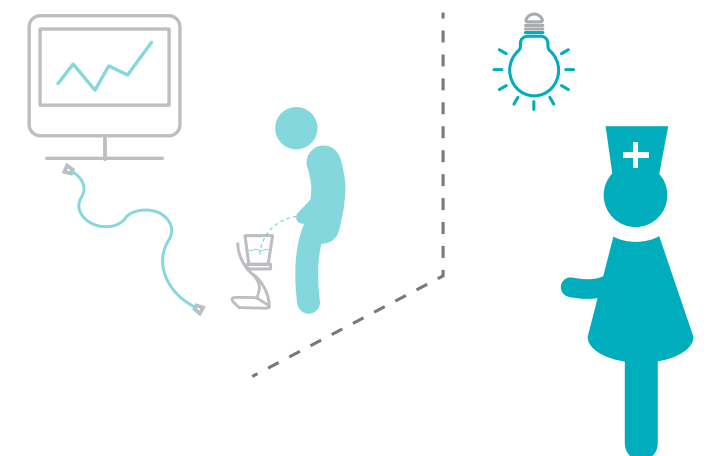
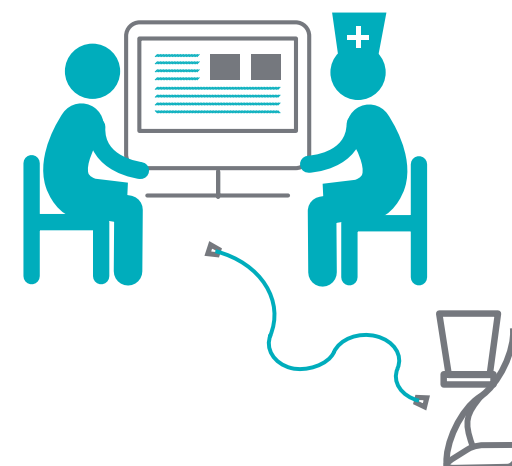
- Uroflowmetry weight transducer with a small compact thermal printer connected via cable or wirelessly.
- DanFlow 1100 is essentially the same in function as the DanFlow 1000 but removes the cable link between flow transducer and printer by using an 866/915 MHz wireless signal which brings a lot of benefits.
- This model delivers increased levels of patients privacy, flexibility and portability. It opens up use in rooms not necessarily built to accommodate urine flow meters. It uses a much more stable platform than Bluetooth based devices.
- Automatic data storage onto an inbuilt SD card.
- SD memory card can be easily removed and inserted into your computer for subsequent storage or processing records if desired.



# DanFlow 2000

Highly reliable flow meter connected to a computer or notebook using a USB connection.

- DanFlow 2000 flow meter is a highly reliable uroflowmetry device connected to a computer or notebook using a USB connection.
- Advanced SW functionality includes automatic/manual uroflowmetry, patient database, real time flow curve, multiple types of nomograms.
- Pocket size of the control unit.
- No need for a separate charging.

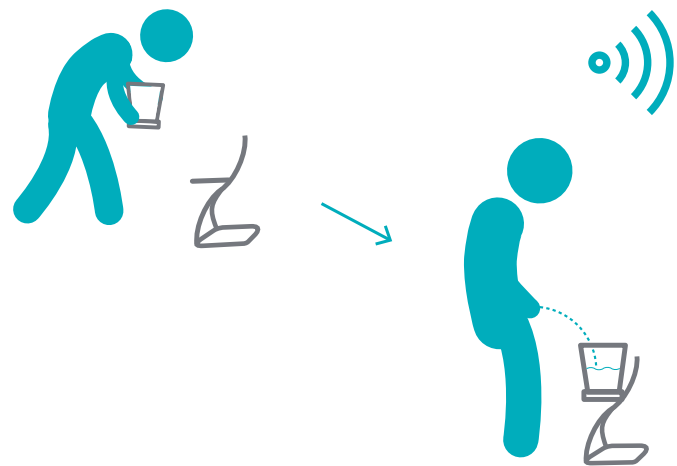


# DanFlow 3000

Urine flow rate systems aimed at wireless data transmission and digital results storage.



- Uroflowmetry weight transducer with USB dongle to wirelessly connect a control PC or notebook using a unique 866/915 MHz frequency.
- This connection at 866/915 MHz frequency provides the Gold Standard in terms of reliability and maximum signal range.
- DanFlow 3000 has fully automatic functionality which makes it easy to operate.
- PDF reports automatically stored and printed out if desired.



# DanFlow 3000 Plus

Flow meter connected to a computer or notebook using a wireless connection offers advanced features.

- DanFlow 3000 Plus flow meter is a highly reliable uroflowmetry device wirelessly connected to a computer, notebook or tablet.
- Connection is possible at the 866/915 MHz frequency or via BlueTooth on Windows based systems.
- Tablet version is possible also as a portable version.
- Optional setting according to end-user's request: start of the measurement by the flow detection; light signalization; sound signalization.
- Advanced SW functionality includes automatic/manual uroflowmetry, patient database, real time flow curve, multiple types of nomograms.





# Accessories for DanFlow

## Accessories for DanFlow

Cable length up to 6 meters

Flow meters utilize wired / wireless weight cell transducer technology to transform urine flow from the patient into a graphical format.

Two types of stands for flow meters – both of them are easily height adjustable.



• DanFlow type      • Economy type



Unique wireless technology at 866/915 MHz

- massively improved range between flow rate and printer compared to Bluetooth (BT)
- walls and doors will not be an obstacle unlike with BT
- working distance up to 50 m
- hugely improved stability compared to BT, no signal dropout

Incredible battery performance



- up to 2 years between changes
- no regular/daily charging of flow meter base meaning no missed clinics due to flat batteries



Wireless technology at BlueTooth

- working distance up to 10 m
- Integrated feature on most devices (tablets, pc ...)
- primary dedicated for portable version of DanFlow 3000 Plus

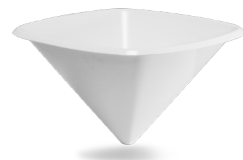
MMT accessories for uroflowmetry meet the high demands of sterile hospital environment and comfortable handling during the examination.



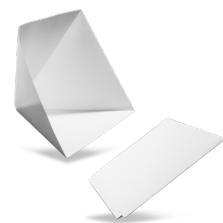
• Wall holder      • Easy to open/lock

• Wall holder – DanFlow 1000/1100

The flexibility of the stands allow them comfortably to slide underneath a commode for kids and female patients.



• reusable funnel  
• 95° resistant



• disposable paper funnel



• reusable stainless steel container  
• measuring scale (1,500 ml)  
• sterilizable in autoclave



• plastic single-use containers with or without measuring scale (1,000 ml)

Portable flow meter allows easy travelling and more flexibility.



• Easy to assemble and start



• Easy to transport with „all in case“ version



• Easy to alter the height

# Basic features of flow meters DanFlow

- Unique features
- Easy to install
- Methods conform the ICS standards
- Design

Basic features of flow meters DanFlow	DanFlow 1000	DanFlow 1100	DanFlow 2000	DanFlow 3000	DanFlow 3000 Plus
Dicom	-	-	•	-	•
Nomograms	-	-	•	-	•
PDF protocol	•	•	•	-	•
Customized protocols	-	-	•	-	•
Language versions	•	•	•	•	•
Online remote service support	-	-	•	-	•
Patients' database	-	-	•	-	•
Real time curves	-	-	•	-	•
Automatic /manual mode	•	•	•	•	•
Post-processing	-	-	•	-	•
Wired connection	•	-	•	-	-
Wireless connection - 866/915 MHz	-	•	-	•	•
Wireless connection - BT	-	-	-	-	•
Thermoprinter	•	•	-	-	-
DanFlow stand	•	•	•	•	•
Economy stand	•	•	•	•	•
Commode	•	•	•	•	•
Reusable / disposable accessories	•	•	•	•	•

• option    • standard    - not available

## Uroflowmeters

With the DanFlow range of urine flow meters, MMT have made Uroflowmetry simple again!





MEDKONSULT medical technology s.r.o.  
Pasteurova 15, 779 00 Olomouc, Czech Republic

T +420 581 113 030  
E [info@mmtsystems.com](mailto:info@mmtsystems.com)

MMTDF\_1

[www.mmtsystems.com](http://www.mmtsystems.com)